



Salem United Methodist Church—Wolfsville

INSIDE

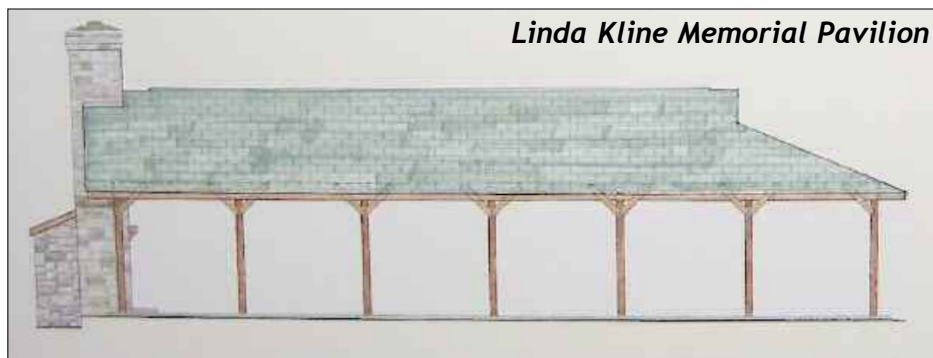


**Youth Group
creates a banner for the
ROCK Youth Retreat
in Ocean City.**
Details on pages 3 & 4.

Missions	2
ROCK Youth Retreat	3
Attendance & Offerings	4
ROCK Photos	4
Baptisms	4
Calendar of Events	5
Valentine Breakfast	5
Skating Party	5
Who's Doing What, When?	6
It's Your Day!	6
Inspirational Reading	7
Recipe	7
From Our Pastor	8
Lent Opportunities	9
Hero's Club	9
Snow Tubing	9
Heavenly Humor	10
Things God Won't Ask	10

Frederick County issues Building Permit for Salem's new Pavilion

Construction to begin this spring



Linda Kline Memorial Pavilion

Architectural drawings by George C. Harne, Architect

After two and one half years of engineering and architectural work on a site plan, Salem received approval on October 7, 2011, from the Frederick County Department of Planning and Development Review, for construction of a pavilion.

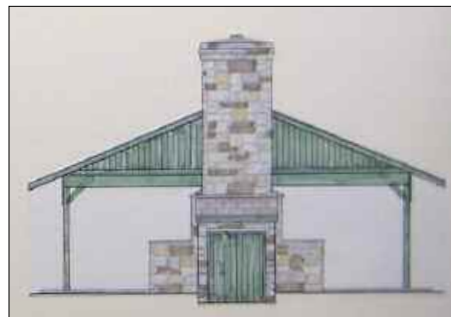
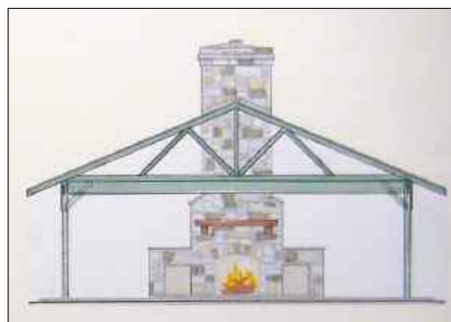
Following site plan approval, Salem applied to Frederick County for a building permit in early December, which subsequently received approval as well.

The pavilion will be built in memory of Linda Kline, and funded from contributions received for the Linda Kline Memorial Fund, now the Linda Kline Memorial Pavilion Fund. The pavilion will be located near the rear church parking lot.

George Stottlemeyer, Chair of Salem's Board of Trustees, expresses his thanks, saying, "We are so thankful that we have received the long awaited approval from the Frederick County Department of Planning and Zoning and have received the Building Permit allowing us to begin the construction of our pavilion, being built through contributions made in memory of Linda Kline.

"We are grateful for all the time consuming hard work that George Harne put into, not only getting the permit approval, but also in designing the pavilion.

"We are now working toward entering the construction phase. Salem member



Brandon Leatherman has agreed to take on the leadership role in the construction, and he has already begun planning to begin work as early as April, weather permitting. We anticipate much of the construction being completed with help from the many talented members of our church."



The Mountain Shepherd

Published monthly by Salem United Methodist Church – Wolfsville.
Our mailing address is 12477-79
Wolfsville Road, Myersville, MD 21773-9303

EDITOR: William G. Burrier
P. O. Box 94
Myersville, MD 21773-0094
E-Mail: BillBurrier@verizon.net

Articles without a byline are written
by the editor.

PASTOR

Robert E. Snyder
12477 Wolfsville Road
Myersville, MD 21773-9303
Parsonage Phone: 301-293-1616
Cell Phone: 240-994-0825
Email address: revbsnyder@comcast.net

SALEM KEY CONTACTS

Lay Leader: *Sue Ellen Stottlemeyer*
Chair, Admin. Council: *Vernon Stottlemeyer*
Outreach: *Barbara Stottlemeyer*
Worship: *Mary Alice Shankle*
Sun. School Superintendent: *Bobby Fogle*
Chair, Board of Trustees: *George Stottlemeyer*
Church Treasurer: *William Burrier*
Sunday School Treasurer: *Mary Fogle*
Chair, Pastor-Parish Relations: *Robin Haupt*
Chair, Evangelism: *Michael Burrier*

SALEM MEMBERSHIP STATISTICS

Current Membership: 223
Sunday School Enrollment: 77
2012 New Members: 0

SALEM PHYSICAL FACILITIES

Church built 1847
Educational Building built 1967
Parsonage built 1974-75

SALEM WEB SITE

www.SalemChurchWolfsville.org

COLOPHON

Produced using QuarkXPress 8.12 and
Mac OS 10.6.8, on an Apple 20" iMac
computer, along with an H.P. LaserJet
4000N postscript laser printer, Epson
Perfection 4490 photo scanner, Canon
PowerShot SD-1000 digital camera, and
Ricoh MP-3351 digital laser copier.

OUR PURPOSE

The purpose of this newsletter is to provide
a means of communicating with our mem-
bers, their families, and our many friends of
the Wolfsville community and surrounding
areas. We pray that this newsletter will in-
spire you, our readers, to regularly attend
worship services, Sunday School, and all
other activities of the church. For those who
are unable to attend, this newsletter is a
means of bringing part of the church to you.



2011 MISSION PROJECTS

FINAL for 2011

		Monthly Minimum	Paid Jan-Dec	2011 Goal	% of Goal
1	Frank & Nancy Stottlemeyer Retired Senegal Missionaries	\$204	\$2,499.00	\$2,448	102%
2	Operation Christmas Child Postage for Shoe Boxes - Samaritan's Purse - November	—	210.00	\$355	59%
3a	Salem Mission & Outreach Supports human needs as determined by Salem	—	\$2,503.77	\$1,180	212%
3b	Salem Food Pantry Open every Monday 6:00-7:00 p.m.	—	\$1,233.73	\$1,179	105%
4	Mary Elmore - Africa Inland Mission Working in Tanzania, Africa	\$85	\$1,020.00	\$1,020	100%
5	United Methodist Board of Child Care Care of Homeless or Abused Children	—	\$1,017.25	\$1,360	75%
6	Gideons International Frederick County - West Camp - Distributing Bibles	\$110	\$1,320.00	\$1,326	100%
7	Henderson Settlement Impoverished Appalachia - Frakes, Kentucky	\$57	\$684.00	\$688	99%
8	Potato Project Society of St. Andrew, Big Island, Virginia	\$60	\$720.00	\$714	101%
9	Middletown High School Fellowship of Christian Athletes	\$47	\$564.00	\$561	101%
10	Mission Trip Destination to be determined	—	0	\$2,295	0%
11	Ronnie & Angi Hopkins The Mission Society - Mission Work in Nicaragua	\$64	\$768.00	\$765	100%
12	Care Net Pregnancy Center 707 N. Market Street, Frederick, MD	\$64	\$789.00	\$765	103%
13	Compassion International Sponsored children in Ecuador & India	\$76	\$942.00	\$942	100%
14	Local Mission Projects Supporting local repair or renovation needs	—	0	\$1,250	0%

Total 2011 Mission Goal: **\$16,878**

Here's how you can give...

1 Make checks payable to Salem United Methodist Church, or place cash contributions in an envelope marked "Missions."

2 Tell us which mission project(s) you wish to support by making a note on your check or envelope.

3 Place your contributions in the offering plate at Sunday worship. If you do not designate a specific project, your contribution will be distributed to the project or projects needing funds to meet the monthly minimum payout goals listed above.

SALEM MISSION PROJECTS FOR 2012

	2012 Goal
1. Frank & Nancy Stottlemeyer (Retired Senegal Missionaries)	2,448.00
2. Operation Christmas Child (Postage/Shipping for Shoe Boxes)	355.00
3. Salem Mission and Outreach (Local outreach needs)	1,180.00
4. Food Pantry at Salem	1,180.00
5. Mary Elmore (Africa Inland Missions - Tanzania)	1,020.00
6. Board of Child Care (Auxiliary and Christmas Offering)	1,360.00
7. Gideons (Frederick County West Camp - Distributing Bibles)	1,320.00
8. Potato Project (Society of St. Andrew, Big Island, VA)	720.00
9. Middletown High School Fellowship of Christian Athletes	564.00
10. Mission Trip (Destination to be determined)	2,295.00
11. Ronnie & Angi Hopkins (Mission work in Nicaragua)	768.00
12. Care Net Pregnancy Center (Frederick, MD)	768.00
13. Compassion International (Two sponsored children)	942.00
14. Local Mission Projects	1250.00

Henderson Settlement has been deleted for 2012 due to lack of support.



Grades 6 through 9

FAITH BUILDERS *at* ROCK 2012



ROCK Youth Retreat Ocean City, MD • January 20-22, 2012



This year Donna, Pastor Bob and Colleen Snyder, Owen and Camden Raynor, Bailey Blickenstaff, Wanda, Camilo, and Valentina Barkdoll, Sue Ellen Stottlemeyer, and Denny and Chris Leatherman, went to Ocean City for 3 days, and while we were there, we went to ROCK 2012.

We ate at Taco Bell on the way (very good). We stayed at The Carousel in a condominium, which had a very nice view of the beach.

We had a small devotional before we went to Ocean City, then we hit the road. While we were on the road, Wanda, Sue Ellen and Donna made a few illegal turns but later on, we got to see the Bay Bridge. We got there a little late because Denny had to make a "pit stop."

We arrived safely and had a great arrival. The first thing we did in the hotel after we got all comfortable, was go to the heated pool! The best part was, they had a ping pong table (so much fun)!

After supper, we went to the first meeting of ROCK 2012! We had great music by Nicole C. Mullen and Salt and Light. We had a guest speaker, Steve Fitzhugh; he was a football player for the Broncos — he should be a comedian.

After that, we all went to bed, but not before Owen stuffed himself with three donuts!

The next morning (Saturday), we all took our showers and we ate breakfast. After that, we went to the Praise and Worship Service, and the first Breakout Session. After that, we had free time from 12:00 noon to 6:30 p.m. We drove to McDonald's and ate lunch.

Now let me tell you that the temperature was in the low 40's, and no less than 20 degrees in the ocean. Owen, Camden, Camilo, and Chris made some bets that they would go Polar Diving. Polar Diving is where you run into the freezing cold water and dunk your whole body down. We all sprinted into the ocean, and we have pictures! To make a long story short, Owen, Camden, Camilo, and Chris got paid by the adults (Whoop Whoop)!

The day ended with a breakout session and a POWERFUL evening Praise and Worship Service. Owen and Chris

Polar Plunging ... Ice Skating Swimming Pool .. Sofa Google glasses ... Camden, Denny and Donna kept up on current events. Camden called it!	
---	--

went up to the altar call to accept Christ and begin a new relationship with Him.

The next morning, all of us were really tired and we had to pack up to leave for Smithsburg and Myersville. We attended a ROCK church service and then we left to go back home.

■ *Written by: Chris Leatherman, with the help of his other brothers and sisters in Christ. God bless you all!*



Salem's Faith Builders pose in front of their banner at ROCK Youth Retreat, Ocean City. From left, Bailey Blickenstaff, Camden Raynor, Chris Leatherman, Valentina Barkdoll, Owen Raynor, and Camilo Barkdoll.



Polar Plunging

Youth Group Contacts:

- **Pastor Bob Snyder**
240-994-0825
revbsnyder@comcast.net

Faith Builders (Grades 6-9)

- **Donna Snyder**
240-994-0338
donna.snyder@insperity.com

Wildfire (Grades 3-5)

- **Jessie Leatherman**
240-676-1811
jessieleatherman@comcast.net

“It was really an awesome time. Two of our youth went up for the altar call and accepted Christ. It was really beautiful!”

—Donna Snyder



Google Glasses

"Know, in all these things we are more than conquerors through him who loved us."

—Romans 8:37





Attendance & Offerings

DECEMBER 2011

		Worship*		Sunday School	
Dec	4	106	\$1,928.34	62	\$277.50
Dec	11	96	1,789.00	49	136.50
Dec	18	105	2,348.50	62	169.50
Dec	25	112	1,769.80	53	177.20

	Average Attendance	
	Worship	Sunday School
Dec	105	57
Nov	94	61
Oct	92	53
Sept	108	57
Aug	91	54
July	78	51

*Worship attendance & offerings include both worship services.

- **Missions:** \$2,569.00
- **Pavilion Fund:** \$180.00
- **Building & Imp. Fund:** \$281.00
- **Cemetery Endowment:** \$40.00

(Missions, Building Fund offerings, etc. are not included in Worship & Sunday School offerings above.)

Average Attendance Jan-Dec 2011
 Sunday Worship: 92
 Sunday School: 56

ROCK Youth Retreat • Ocean City, MD • January 20-22, 2012

—continued from page 3



JANUARY 21, 2012 — Steve Fitzhugh, former NFL player for the Denver Broncos and Cleveland Browns was the featured speaker at the ROCK Youth Retreat. Steve poses with Salem's Faith Builders youth group in Ocean City. More than 7,000 attended, the most ever to attend this event. From left are Owen Raynor, Chris Leatherman, Steve Fitzhugh, Valentina Barkdoll, Camden Raynor, Bailey Blickenstaff, and Camilo Barkdoll. The dates for next year's ROCK 2013 have already been set for January 11, 12 & 13.



JANUARY 20, 2012 — Salem's youth and adult chaperones were greeted at the ROCK Youth Retreat in Ocean City by Rev. William Chaney, Western Region Guide for the Baltimore-Washington Conference of the United Methodist Church. From left are Wanda Barkdoll, Sue Ellen Stottlemeyer, Owen Raynor, Camden Raynor, Donna Snyder, Bailey Blickenstaff, Pastor Bob Snyder, Chris Leatherman, Valentina Barkdoll, Rev. William Chaney, Colleen Snyder, Camilo Barkdoll, and Denny Leatherman.



"Christmas Day" Baptisms

Salem rejoices with the Nichols family in their baptism at the 11:15 a.m. contemporary service on Christmas Day. Participating in the baptism were Donna Nichols, Christopher Nichols, Emma Nichols, and Lindsey Nichols. Their sponsor, Della Hager, assisted with the baptism. Pastor Bob Snyder officiated.



February

Calendar of Events

- Wed 1 Salem Ladies Christian Book Club** - 7:00-8:30 p.m. at Joy Young's home
- Thu 2 UMW Bee-lievers** - 7:00 p.m. at Salem
Board of Trustees - 7:30 p.m. at Salem
- Sun 5 Bible Study** - 5:30-7:00 p.m. at Salem (8-week study on Sunday evenings)
- Tue 7 Adult Choir Practice** - 7:30 p.m. at Salem (Every Tuesday evening)
- Thu 9 Administrative Council** - 7:00 p.m. at Salem
- Sun 12 Second Sunday Youth Meeting** - (Grades 3-9)
5:00-5:30 dinner; 5:45-7:00 p.m. meeting at Salem
- Sat 18 Women's Valentine Prayer Breakfast** - 8:30 a.m. at Salem
- Sun 19 Roller Skating Party** - 4:30-7:00 p.m. at Cosmic Skate & Play, Waynesboro, PA
- Mon 20 Wolfsville Ruritan Club Dinner** - 2:00 p.m. prepare, 7:00 p.m. serve at Salem
- Wed 22 Ash Wednesday** - 6:00 p.m. fellowship meal, 7:00 p.m. Ash Wednesday service

NOTES: Hero's Club meets every Monday when school is open.
Food Pantry is open every Monday 6:00-7:00 p.m.



Newsletter Distribution

- E-Mail** — We are currently sending this newsletter to 167 of our readers via e-mail. Our desire is to obtain as many e-mail addresses as possible.
- Pick Up Paper Copy at Church** — We are printing 85 copies for members who do not have e-mail and can pick up their copies at church.
- First Class Mail** — We are mailing about 30 copies, using the 45 cents First Class postage rate.

Salem Adult Choir Notes

■ By Sandy Lewis

The Adult Choir will begin practicing for the spring season starting on Tuesday, February 7, 2012, at 7:30 p.m. We will be preparing songs for morning worship, for Palm Sunday, Holy Week and Easter. Easter will be on April 8, 2012, and it will be here before we know it. We welcome anyone who would like to join our group. We always have a great time of fellowship and singing praises to the Lord.



Bee-lievers News and Notes

■ By Petie Stup

Salem's United Methodist Women Bee-lievers met on January 5, 2012, to repair some of the Christmas ornaments. It brought back a lot of memories for the members that originally worked on these decorations.

The next meeting will be on February 2, 2012, at 7:00 p.m. in the church social area. We will be working out the details for serving the Ruritan dinner on February 20th.



WOMEN'S VALENTINE PRAYER BREAKFAST

Saturday, February 18, 2012
8:30 a.m. to 12 Noon
at Salem



For more information contact:
Donna Snyder
Donna.Snyder@insperity.com
240-994-0338



Sunday, February 19, 2012
4:30 - 7:00 p.m.

Cosmic Skate & Play

11870 Buchanan Trail East
Waynesboro, PA
717-762-7177

FREE ADMISSION
FREE SKATES

Invite your friends.

For more information contact:
Joe Hawkins
240-818-0006
jch1973@comcast.net

Who's Doing What, When?

FEBRUARY

9:00 A.M. TRADITIONAL WORSHIP

Lay Reader

- 5 - Adam Robinson
- 12 - Robin Haupt
- 19 - Mary Cline
- 26 - Mary Alice Shankle

Ushers

- 5 - Dick Kline & Steve Leatherman
- 12 - Vernon Stottlemeyer & Robin Haupt
- 19 - Donald Stottlemeyer & Meredith Harshman
- 26 - Philip Koons & Brandon Leatherman

Organist

- 5 - Krista Bussard
- 12 - Susan Koons
- 19 - Krista Bussard
- 26 - Susan Koons

Greeters

- 5 - Cindy Draper
- 12 - Phyllis Beall
- 19 - George, Barbie, & Matt Stottlemeyer
- 26 - Dennis & Ruth Draper

Acolytes

- 5 - Ali Robinson
- 12 - Jadie Buhrman
- 19 - Ali Robinson
- 26 - Joshua Koons

11:15 A.M. CONTEMPORARY WORSHIP

An informal **FAMILY FRIENDLY** service with contemporary Christian music, pastor's sermon, children's time, sharing of joys and concerns, prayer, and multimedia to enhance the worship experience.

It's Your Day!

February Anniversaries

- 16 - Olvey & Delores Myers

February Birthdays

- 3 - Michael Burrier
- 3 - Ruth Draper
- 4 - Margie Kline
- 6 - David Woods Jr.
- 9 - Robin Haupt
- 9 - Robert Keller Jr.
- 9 - Patrick Waite
- 9 - Jim Bullock
- 10 - Trista Wright
- 10 - Linda Hessong
- 13 - Emma Waite
- 16 - Polly Miller
- 19 - Samuel Sowers
- 21 - Dianna Poling
- 23 - Rev. H. Ronald Ellis
- 24 - Scott Wisner
- 24 - Grace Adams
- 26 - Wesley Beall

TO ADD YOUR NAME to the anniversary and birthday lists, contact Bill Burrier at BillBurrier@verizon.net or call 301-293-2665.



CHILDREN are welcome to stay with their parents during the worship services. Children activity bags are available in the hallway just outside the sanctuary. The small tote bags contain Bible story books, small games, activity books, crayons, activity cards, etc. Please return it to its place at the end of the service.

MORNING MOTIVATION



When I woke up this morning, lying in bed, I was asking myself — What are some of the secrets of success in life?

I found the answer right there in my room:

The fan said ... be cool.
 The roof said ... aim high.
 The window said ... see the world.
 The clock said ... every minute is precious.
 The mirror said ... reflect before you act
 The calendar said ... be up-to-date.
 The door said ... push hard for your goals.
 The carpet said ... kneel down and pray.

Have a purposeful day!

—Submitted by Mary Alice Shankle

Holy Communion

FEBRUARY 5, 2012

9:00 a.m. & 11:15 a.m. Worship



NEW CEMETERY Now Open



To purchase a burial lot, contact
George Stottlemeyer at 301-293-2372

BULLETIN BOARD with a message

**HONK IF YOU LOVE JESUS
TEXT WHILE DRIVING
IF YOU WANT TO MEET HIM**

Submitted by Marilyn Leatherman



INSPIRATIONAL Reading

A Valentine

By Cleo King

How sweet to get a valentine
Of plain or fancy art,
A rose so pink and violets, too,
Or satin-covered heart.



But more than beauty or design,
We prize the words that say
The sender's love comes with the gift
In quite the warmest way.

We like to know that someone cares,
That someone wants to do
The kindly deed that makes us feel
Well loved and happy, too.

So why not give expression then,
To love for friends so dear,
Not only on one certain day
But many times a year?

Our valentines may be a smile,
A cheerful word or two,
A helping hand, a tender glance
That signals, "I love you."

And if we often take the time
To give these friendly signs,
The world will soon be brightened by
Our daily valentines.

Reach Out

By Darlene R. Fountain

Reach out and take our Savior's hand
It's such an easy thing to do
You will find that you can trust Him
He will always see you through.



You can lean on Him when you need to
He will never allow you to fall
He's closer than your next heartbeat
He'll hear your slightest call.

If you cannot walk, He'll carry you
Until you're able to travel again;
The peace and the joy He'll give all the while
Is beyond the understanding of men.

So reach out and take our Savior's hand
You've all to gain and naught to lose
He's waiting and bids you come to Him,
But it's up to you to choose.

Proclaim liberty throughout all the land unto
all the inhabitants thereof. —Leviticus 25:10



RECIPE



PINE BARK

Saltine Crackers (original with salt) - 2 sleeves
1 cup Dark Brown Sugar (packed)
1 stick butter
Nestlé Semi-Sweet Chocolate Chips (12 oz.)

Heat oven to 400 degrees. Bring the dark brown sugar and butter to a boil in a sauce pan, stirring constantly for approximately 3 minutes. Mixture will thicken when done.

Line a cookie sheet with aluminum foil. Place saltine crackers (salt side down) and cover cookie sheet with crackers.

When brown sugar and butter have thickened, pour over crackers, so all crackers are covered. Bake in oven for 4 minutes (mixture should be bubbling and crystallizing). Remove from oven and sprinkle chocolate chips over crackers. Set for 20-30 seconds, then spread chocolate evenly over crackers. Allow to cool then place in refrigerator for at least 2 hours. Remove from refrigerator and peel aluminum foil off of the pine bark. Break into random sized pieces and freeze until ready to serve.

Submitted by Donna Snyder

On Christmas Day, Donna made this snack for the
Adult Discussion Group Sunday School Class.



Thankful for America

By Ethel Durnal Posegate

I'm thankful for America:
The way of life we've known
And all the precious freedoms we
Can call our very own.

I'm thankful that we have a voice
That we are free to use
And pray to God for wisdom in
The leaders whom we choose.

I'm thankful for those patriots who
Loved honor more than fame,
Who instigated laws which have
Preserved America's name.

May it be always possible—
Down through the years — that we
Through conscientious effort keep
This great land safe and free.

1. Take your
bananas apart
when you get
them home. If
you leave them connected at the
stem, they ripen faster.

Hints and Tips

2. Store your chunk of cheese in aluminum foil. It will stay fresh much longer and not mold.

3. Peppers with 3 bumps on the bottom are sweeter and better for eating. Peppers with 4 bumps on the bottom are firmer and better for cooking.

4. Add a teaspoon of water when frying ground beef, it will help pull the grease away from the meat while cooking.

Submitted by Dennis Draper



Winter Walk

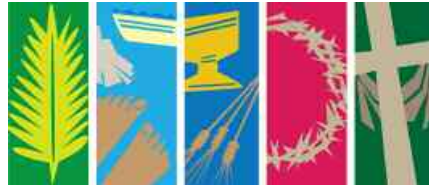
By Diane Workman Scott

Come and walk with me, along the snowy ways,
Enjoy the crispy feel, of cold and golden days.
Come and walk with me, beside the icy stream,
Listen to it singing, lightly flinging, winter's theme.
Come and walk with me, around a woodsy bend,
Discover footprints, soft sprints, to a foxes den.
Come and walk with me, to wait the evening fall,
Watch the sun turn pink, slowly sink, this is best of all.



By PASTOR ROBERT E. SNYDER

WORSHIP in FEBRUARY



This month brings to an end our "Welcoming Life" sermon series. Through the series, our Lord reminds us that we all have been given a story to share. God has chosen us to share it with at least one other person. When we share it, God will work through our sharing and transform that person's life. By transforming their life, other lives will be transformed and the world will change – all with the sharing of our story.

Let us encourage one another to share our stories of life and faith throughout 2012, and then watch for God's handiwork as it unfolds before us.

The Sunday before the beginning of Lent is "Transfiguration Sunday," this year on February 19th. On this Sunday, God implores us to "listen to Jesus" as we enter the Lenten season.

Ash Wednesday is the start of our Lenten journey, and the start of our new sermon series "A Journey of Hope."

In his journey to the cross, Jesus teaches us many valuable life lessons. This series explores Jesus' practical teachings about risk, making choices, self esteem, work and time, temptation and Sabbath, money, and suffering. These are practical teachings we can use in our lives right now. Please don't miss the start of Lent and the start of this helpful sermon series – it begins on Ash Wednesday, February 22.

Here are more details of the worship opportunities coming up in February. May God bless you richly during the upcoming season of Lent.

Grace and Peace, *Pastor Bob*

February 5th - "A Welcoming Life" Sermon Series, Holy Communion Week 5 - "Welcome Your Guest into Your Faith Community"

We are sometimes shy to invite people to our congregations, for fear they'll say "no." But I have been surprised at how many people say "yes" when they are asked. I think our fears are unfounded. A personal invitation from a friend to attend church is really helpful. When that person does come, we want to be ready and able to welcome them warmly and

genuinely. This Sunday, Christ welcomes all in attendance to partake in Holy Communion, the Lord's Supper, which He has prepared for us as spiritual nourishment. As Christ welcomes me, do I, in turn, welcome all others? When asked, "What do you do well," it is typical for almost all congregations to respond "We are a welcoming congregation. People feel so welcome when they come here." The reality is that we could all become more welcoming.

February 12th - "A Welcoming Life" Sermon Series Week 6 - "Keep in Touch"

Welcoming another person is a marathon rather than a sprint. The old saying, "he was my friend through thick and thin" communicates the passage of time. In the video that accompanies this sermon series, the woman asks the deliveryman how his wife is doing. Apparently, she had asked this before and on at least one occasion he shared about his wife's illness with her. By continuing to ask, she was leaving the door open for him to share more if he chose to do so. She was "keeping in touch."

As we welcome visitors and new members into our congregation, we can "keep in touch" - anticipating questions, being responsive to needs, and leaving them with not a speck of doubt that they are our brothers and sisters in Christ's community at Salem.

February 19th - Transfiguration Sunday "The Transfiguration" Mark 9:2-10

Can you imagine being there and experiencing what they experienced? Jesus invited Peter, James, and John to go with him up a high mountain. Mark 9:2b-3 records what happened next: "There he [Jesus] was transfigured before them. His clothes became dazzling white, whiter than anyone in the world could bleach them. And there appeared before them Elijah and Moses [both deceased], who were talking with Jesus." Verse 7 contin-

ues, "Then a cloud appeared and enveloped them, and a voice came from the cloud: 'This is my Son, whom I love. Listen to Him!'" The imagery is so intense that we tend not to hear the final words of God – the words "Listen to Him!" (with an exclamation point). Once you see these words, they seem to jump off the page every time the passage is read again. It is as though God is saying to us, "You are making it way too complicated. Just listen to Jesus!" Jesus has the words of eternal life, Alleluia! (John 6:68).

February 22nd - "A Journey of Hope" Lenten Sermon Series Ash Wednesday - "Risking Adventure" Fellowship Meal: 6-7 p.m. Worship: 7-8 p.m.

Ash Wednesday is an important start to our Lenten journey. It sets the stage for the whole journey. On Ash Wednesday we acknowledge our mortality, our need for confession and forgiveness, and our desire to become more like Christ in our faith and service. Spiritually, we prepare ourselves to make the journey.

This year on Ash Wednesday, we'll also begin our Lenten Sermon Series, "A Journey to Hope." Christ teaches us how to journey through life as he makes his own journey to the cross. The sermon topic for Ash Wednesday is "Risking Adventure." Life's most rewarding experiences, life's greatest memories, typically involve both the risk and the adventure that come when we say "Yes" to Jesus' command "Follow Me." For more information on the series, see the announcement, Lenten Sermon Series "A Journey to Hope" in this edition of the newsletter.

February 26th - "A Journey to Hope" Lenten Sermon Series First Sunday in Lent - "Choosing Your Traveling Companions"

God commands us to "love our neighbor" (Matthew 22:39). God loves all people equally. We are called to do the same. Among God's people, we come to look to certain people as role models, and we become role models to others. Among God's people, we develop trusted friends who uphold us at all times through thick and thin - people who celebrate our mountaintop experiences with us and people who care for us during the low points in our lives. My great uncle used to say when I was a young boy, "When you die, if you can count your true friends on one hand, you've been blessed." Jesus Christ is the truest of all friends. When we give ourselves to him, he never fails us.

WORSHIP, FELLOWSHIP, & PRAYER OPPORTUNITIES

LENT at Salem

Worship, Fellowship and Prayer Opportunities during Lent

■ By Pastor Bob Snyder

February

22 Ash Wednesday. Congregational Meal (6-7 p.m.), Worship (7-8 p.m.) Child care provided.

"A Journey of Hope" Lenten Sermon Series. Week 1 – "Risking Adventure"

26 Sunday Worship. "A Journey of Hope" Lenten Sermon Series. Week 2 – "Choosing Our Traveling Companions"

29 Wednesday Prayer - Sanctuary open for private prayer, 7-8 p.m.

March

4 Sunday Worship. "A Journey of Hope" Lenten Sermon Series. Week 3 – "Self-Esteem"

7 Wednesday Prayer - Sanctuary open for private prayer, 7-8 p.m.

11 Sunday Worship. "A Journey of Hope" Lenten Sermon Series. Week 4 – "Work and Time"

14 Wednesday Prayer - Sanctuary open for private prayer, 7-8 p.m.

18 Sunday Worship. "A Journey of Hope" Lenten Sermon Series. Week 5 – "Temptation and Sabbath"

21 Wednesday Lenten Worship. Congregational Meal (6-7 p.m.),

Lenten Sermon Series

"A Journey to Hope"

As we follow Christ to the cross this Lenten season, our Lord calls us to learn from his teachings about:

Feb 22 Risk (Ash Wednesday)

Feb 26 Choosing our Traveling Companions

Mar 4 Self-Esteem

Mar 11 Work and Time

Mar 18 Temptation and Sabbath

Mar 25 Money

Apr 1 Suffering (Palm Sunday)

Useful teachings from our Master. Teachings that can make a difference in our lives right now. Commit to attend each week. Invite a friend. Encounter Christ.

Worship (7-8 p.m.) Child care provided.
25 Sunday Worship. "A Journey of Hope" Lenten Sermon Series. Week 6 – "Money"

April

1 Palm Sunday. "A Journey of Hope" Lenten Sermon Series. Week 7 – "Suffering"

4 Wednesday Prayer - Sanctuary open for private prayer, 7-8 p.m.

5 Holy/Maundy Thursday. 7:30 p.m. "The Last Supper" dramatic presentation.

6 Good Friday Worship. 7:30 p.m. Dramatic presentation.

7 Holy Saturday. Prayer Vigil, 12 noon – 12 midnight.

7 Holy Saturday Easter Egg Hunt – 2 p.m.

8 Easter Sunday Sunrise Service 6:30 a.m. at Grossnickle Church of the Brethren

Worship 9:00 and 11:15 a.m. Sunday School – 10:15 a.m.

8 Community Easter Cantata, Garfield UMC, 7:00 p.m.

Prayer and Meditation Stations of the Cross

The sanctuary will be available each Wednesday evening during Lent for individual prayer and meditation. Prayer and meditation is available in the pews, and at the Stations of the Cross, which will be set up in the windows of the sanctuary. During this hour, Pastor Bob or a lay member of the church will be available for prayer — Wednesdays Feb. 29, Mar. 7, Mar. 14, Mar. 28, and Apr. 4.

This is a special opportunity for prayer at the Stations of the Cross. Instructions for this self-guided prayer will be available.



Marcia Whyte and Pastor Bob present a Bible to a Hero's Club student. The Hero's Club children all received Bibles the week before Christmas break. Thanks to all who prayed and gave to this children's ministry. —Submitted by Dawn Nelson

WildFire Youth Group enjoys snow tubing at Roundtop

■ By Jessie Leatherman

It was a cold, clear day, and we found ourselves at the top of an icy hill with a large tube in hand. What to do now? Well there's only one way down, so here we gooooo!

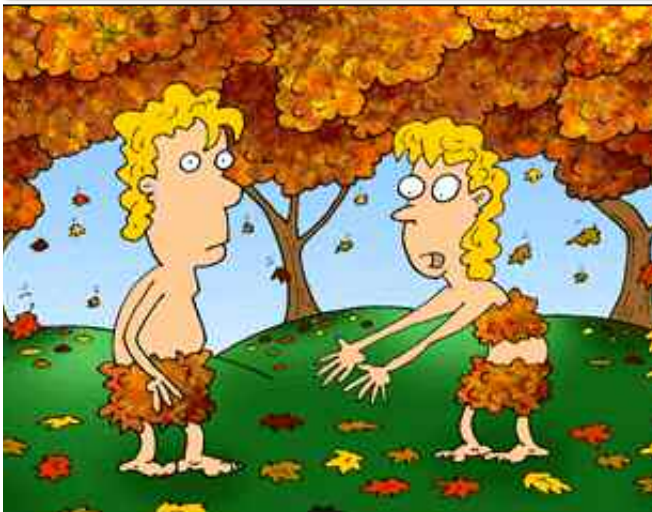
The WildFire group had their first big outing on January 15th, and the group agrees it was a good time! The resort was very kind to our group, accommodating for all our needs – to make sure everyone could fully participate!

With the smell of hot fresh pizza at our noses, the kids floated back and forth between the hills and the heat of the lodge. We were all able to come and go as we pleased.

As I collect photos from parents, we are hoping that they turned out. Look for those photos next month!

Heavenly Humor

by REVERENDFUN.COM



Used with Permission

Will you please pick up all your clothes?

Submitted by Vicki Robinson

Things God won't ask on the last day. . .



- God won't ask how many friends you had. He'll ask how many people to whom you were a friend.
- God won't ask in what neighborhood you lived. He'll ask how you treated your neighbors.
- God won't ask what your job title was. He'll ask if you performed your job to the best of your ability.
- God won't ask what your highest salary was. He'll ask if you compromised your character to obtain it.
- God won't ask the footage of your home. He'll ask how many people you welcomed there.
- God won't ask why it took you so long to see salvation. He'll lovingly take you to your mansion in Heaven.

Submitted by Marilyn Leatherman

Some thoughts to ponder . . .

Yesterday is gone; tomorrow is uncertain; today is here. Use it wisely.

All powerful, merciful, wise, and just is the God in whom we trust.

A life filled with love for the Lord and for others is a fulfilling life.

True humility credits God for every success.

The Mountain Shepherd

Salem United Methodist Church
12477-79 Wolfsville Road
Myersville, MD 21773-9303

www.SalemChurchWolfsville.org

Address Services Requested



TWO WORSHIP SERVICES

— Every Sunday —
9:00 a.m. Traditional
10:15 a.m. Sunday School
11:15 a.m. Contemporary

COME GROW WITH US
Positive • Encouraging • Uplifting

Place Stamp Here

